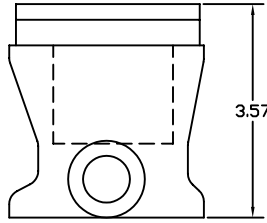
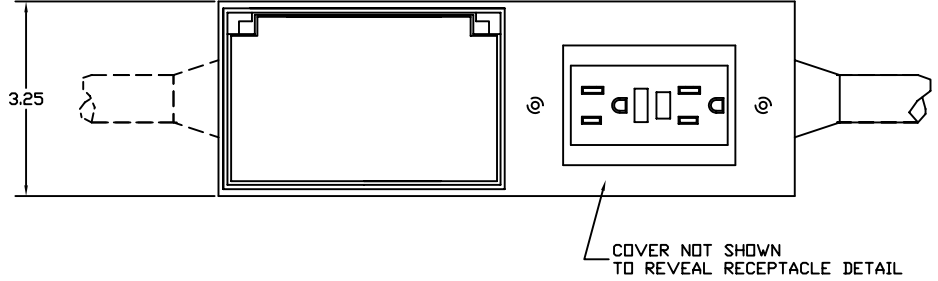


THIS DRAWING/SPECIFICATION CONTAINS PROPRIETARY INFORMATION OF THE J.B. NOTTINGHAM AND CO., INC., DURALINE, WHICH SHALL NOT BE PUBLISHED, REPRODUCED, COPIED, FURTHER DISCLOSED AS THE BASIS OF MANUFACTURE FOR OR SALE OF APPARATUS TO OTHERS THAN THE J.B. NOTTINGHAM AND CO., INC., EXCEPT BY WRITTEN PERMISSION OF A DULY AUTHORIZED REPRESENTATIVE OF SAID COMPANY.

REVISIONS			
REV.	DESCRIPTION	DATE	APPROVED



CABLE RUNS THROUGH BLOCK, OR CAN BE DEAD-ENDED IN BLOCK (AVAILABLE ON 10/3 OR 10/5 CABLE)

NOTE:
 MINIMUM SPACING BETWEEN BLOCKS IS 12".
 MINIMUM OVERALL LENGTH WITH THREE BLOCKS & DEAD END IS 60"

QTY.	CODE	PART NUMBER	NOMENCLATURE OR DESCRIPTION		MATERIAL	ITEM
PARTS LIST						
DIMENSIONS IN INCHES UNLESS OTHERWISE NOTED. TOLERANCES:			4 OUTLET NEMA 5-20 BLOCK W/GFCI			
FRAC.	DEC.	ANG.	APPROVALS	DATE		
MATERIAL	BODY IS MOLDED HYALON		DRAWN	T.P.		
FINISH#			CHECKED		SIZE	FSCM NO.
			ISSUED		A	16998
DD NOT SCALE DRAWING					DWG. NO.	REV.
					SM176100	
			SCALE		SHEET	

DIV. J.B. NOTTINGHAM
 75 HOFFMAN LANE
 ISLANDIA, NY 11749